

# CAMDEN HAVEN LUSC BRIDGE CLUB

## MASTER POINTS REPORTING WITH SCOREBRIDGE

Version 1.0  
Prepared by David Jitts

### 1.0 THE ABF MASTERPOINT MANUAL

The ABF produces a Manual which sets out the Rules regarding the awarding of Master Points. At the time that this CH-LUSC manual was written, the latest version was titled 21<sup>st</sup>. March, 2006 (but the page footers showed 2/08/06! You figure it out). The latest copy is available from the ABF website. Some aspects contained in that Manual have been changed in a *de facto* manner and these changes will be discussed below. The good news is the ScoreBridge has read this rather voluminous ABF Manual and does the work for you.

### 2.0 TYPES OF MASTERPOINTS

This Club plays both Green and Red Point Events. ScoreBridge knows these as Grade E and Grade B4c points respectively. The type of Master Points should be selected when setting up the scoring of each Event. The type is Green (E) by default but this should be set to RED (B4c) when scoring a Red Point Event.

### 3.0 FREQUENCY OF REPORTING

The ABF MasterPoint Centre has advised that they prefer that we send our MP returns on a monthly basis. Preferably on the last day of each month

### 4.0 NAMING OF MP FILES

Contrary to what is stated in the ABF Manual, the files which we send to the ABF should be named as follows:

**M2024QYY.XXX**

XXX = RED for Red Point Report, or  
GRN for Green Point Report

YY = Last two digits of Year, e.g. 07 for year 2007

Q = No. of Quarter, e.g. 1 for Jan/March quarter and 2 for April/June quarter.

2024 is our Club Number and this never changes

M = First letter of reporting month's name, e.g. J for January, F for February, etc.

Unfortunately, when these file are automatically generated by ScoreBridge, they are given slightly different names. It is therefore necessary to look at these files in Windows Explorer and rename them to comply with the ABF naming convention stated above. This renaming operation must be performed before the files are e-mailed to the ABF.

ABF does use other file extensions (such as .MP1, .MP2, .MP5 and .RAG) but at our Club we will not use them at this time.

## 5.0 FORMAT OF MP FILES

If you were to look at a Masterpoint File (type .GRN or .RED) using a text editor such as Windows' NOTEPAD, it would look something like this:

```
0123456000042
0002288000007
0088249000145
etc
etc
```

In other words, 13-digits per line precisely. No characters, no spaces and no signs. Just the 13-digits made up of two individual sets of digits representing the player's ABF number (7-digits) and the awards (6-digits). ABF works with whole number only; therefore, the last 2-digits of the awards are assumed to be the decimal part. If the number of digits are less than those quoted herein, you must left-pack each field with zeros (0). For example, ABF number 123 becomes 0000123 and 0.53 points should read 000053 etc. Thus, in the example above, ABF number 123456 receives 0.42 points, 2288 gets 0.07 and 88249 gets 1.45 points. Very simple stuff!

Note that the format of Red and Green Point files are identical. The only way in which they are distinguished is in the file name extension, i.e. .RED or .GRN

Now, to confuse you , there is also a file type which, in addition to the ABF number, contains a combination of RED and GREEN points, in that order (these are called type .MP5 or .RAG files). At our Club, we will not be using these files because they cannot be generated automatically by the current version of ScoreBridge.

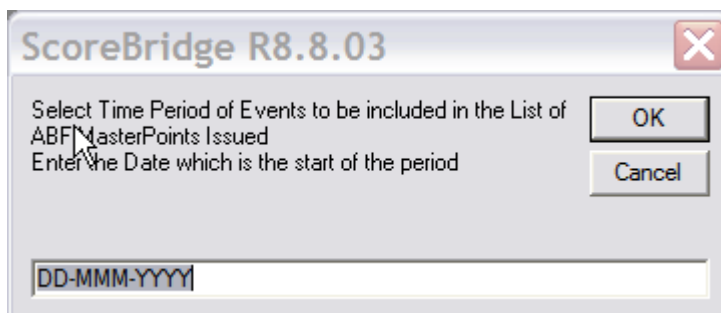
## 6.0 GENERATING THE MASTERPOINTS REPORT FILES

To start the process of generating the files, we will use an example – we will generate the Reports for the month of January, 07. We will assume that any Red Point Events that were played during that month have been correctly identified as such when the Event was scored.

Open ScoreBridge.

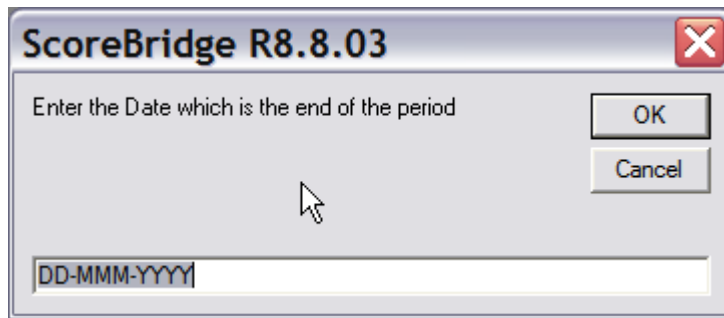
Click on **MasterPoints** in the top toolbar and then click on **Reports Points Awarded** in the drop-down window.

ScoreBridge will open a window as shown below:



Enter the date in the format shown, i.e. **01-Jan-2007**. Click OK.

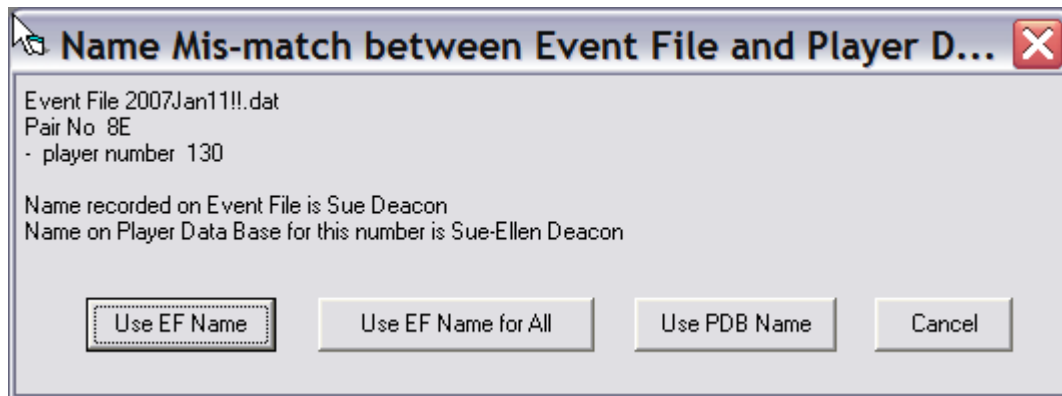
ScoreBridge will open the next window as shown below:



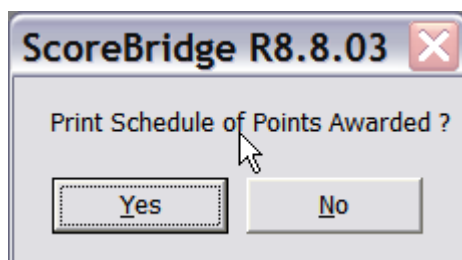
Enter the date in the format shown, i.e. **31-Jan-2007**. Click OK.

### **WARNING!!**

*If you have entered names in the Event that do not match the names in the Player Database you will get Error Messages similar to the one shown below. This Manual is not intended to cover the Event Entry aspects of ScoreBridge but if you fix up the discrepancies you will not get any errors, if you fail to do so and just Click your way out of trouble, the worst result will be that some players may miss out on a few Master Points.*

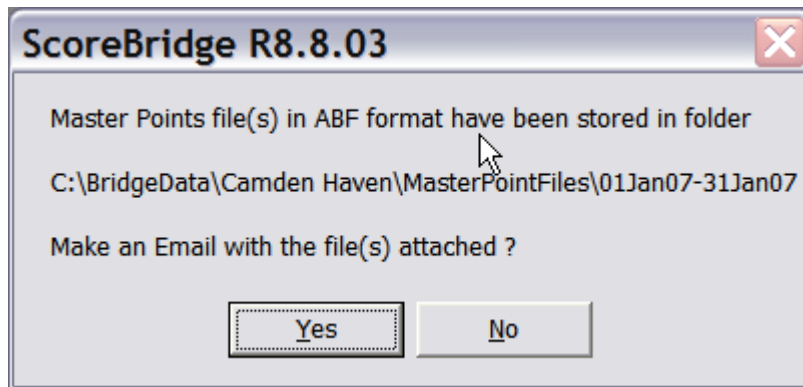


Assuming that there were no Data Entry problems, ScoreBridge will open the next window as shown below:



Take your pick on how to respond to this but be sure the printer is ready to go if you answer "YES". The Club has no need of a hard copy because, as you will see later, we will be sending copies to the Secretary and the Treasurer, so normally you would answer "NO".

ScoreBridge will open the next window as shown below:

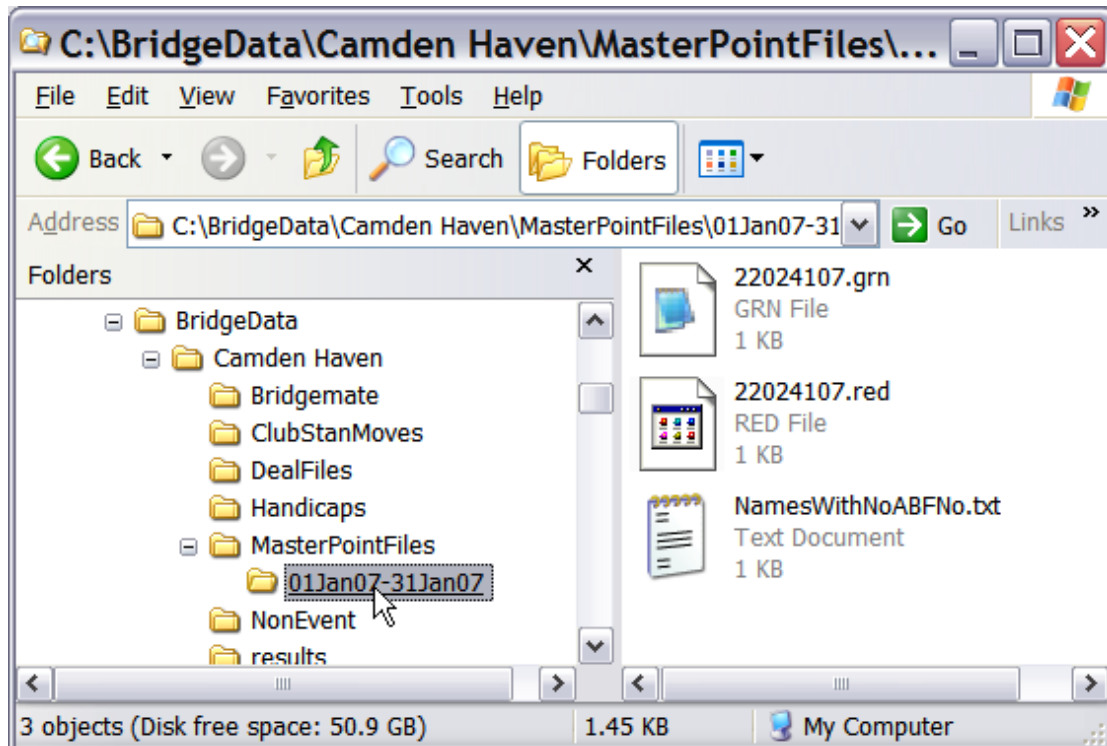


Respond by clicking “NO” because we have to rename these files before we send them.

**NOTE:**  
*If you are sufficiently computer literate you could minimise the BridgeScore window at this point, get into Windows Explorer, rename the file, return to BridgeScorer, click “YES”, add the Treasurer and Secretary to the list of recipients on the e-mail and change the names of the attached files and then send the e-mail. Only do this if you are a computer whiz!*

To rename the files, Open Windows Explorer (Not MS Internet Explorer ) and look in the directory:  
C:\BridgeData\Camden Haven\MasterPointFiles\01Jan07-31Jan07

And you will see something like the picture below.



Note that the .RED file will only be present if we had played one or more Red Point events during January, 07. The NamesWithNoABFNo.txt will be present if we have failed, when entering an Event, to include one or more players ABF numbers.

Right click on the file called 22024107.GRN, click on Rename in the resulting drop-down window and change the first letter to J so that the name becomes J2024107.GRN – the January report. Repeat this for the .RED file if it is present.

## 7.0 WORKING WITH MASTERPOINT REPORT FILES

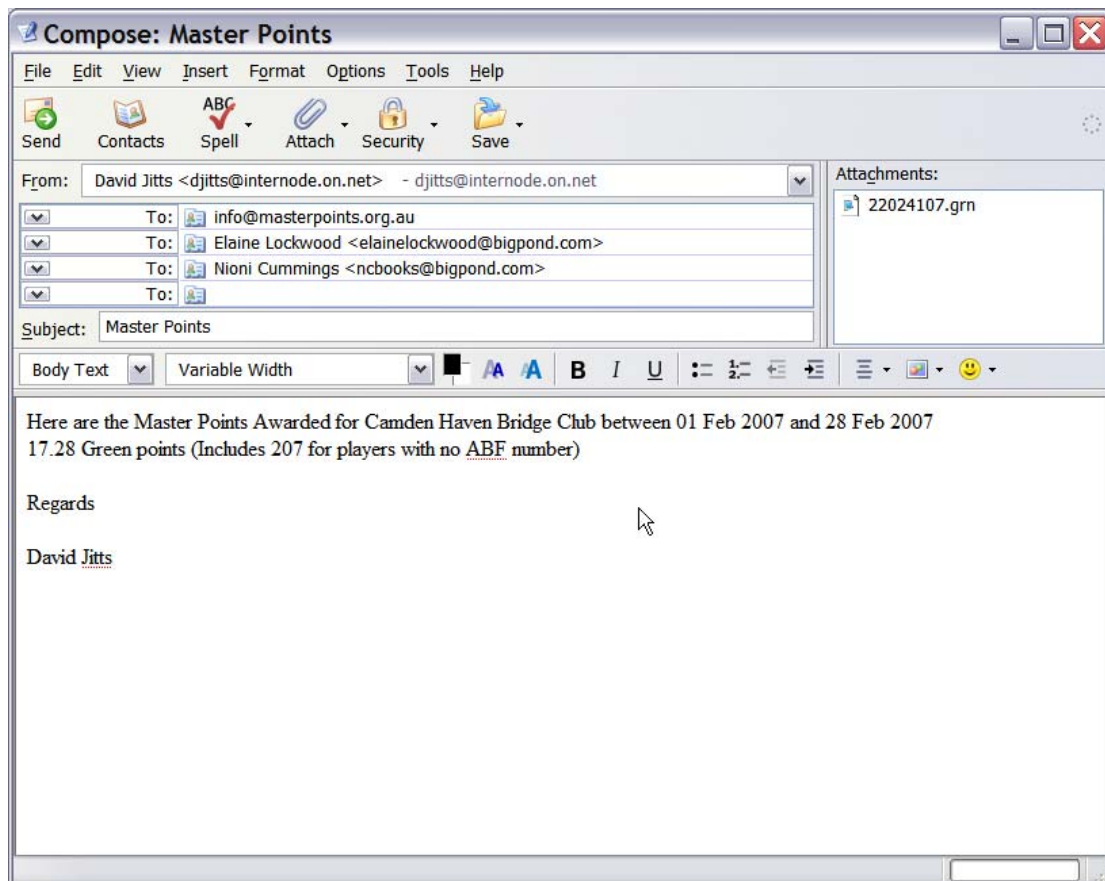
The ABF provides a free Utility which is very helpful in dealing with MasterPoint files. It is called NAT4WIN.EXE and copies may be downloaded from [www.masterpoints.org.au](http://www.masterpoints.org.au).

The functions of this are described in Appendix A, which was downloaded from the MasterPoint website and for which we hereby give acknowledgement.

## 8.0 SENDING THE MASTERPOINTS REPORT FILE

Using your favourite e-mail software, send an email to [info@masterpoints.org.au](mailto:info@masterpoints.org.au) as well as the Club's Treasurer and Secretary to which you have attached the .GRN file and, if applicable, the .RED file. The e-mail must contain the total points awarded during the month for RED and GREEN points. Totals can be obtained using NAT4WINDOWS.EXE which is mentioned above in Para. 7.0

The figure below is a screen grab from my computer which shows an example of such an e-mail, which was automatically generated by ScoreBridge, for the month of February. See if you can spot the error!



*(OOPS! I forgot to change the file name to F2024107.grn)*

# APPENDIX A

## NAT4WIN.EXE FUNCTIONS AND USAGE

**NAT4WIN.EXE** is a program developed by *John Hansen* and written by *Nigel Dutton*. It is used in conjunction with the **NATIONAL.TXT**, **NATIONAL.CLB**, **ALTERNAT.TXT** and **PRE82.TXT** databases and is meant to serve as a utility for *ABF masterpoint secretaries* and other persons interested in creating text files, or viewing masterpoints or player details from the database.

The program is part of the **NATIONAL.EXE** archive file, freely available from the *ABF Masterpoint Centre's* web site on [www.masterpoints.org.au](http://www.masterpoints.org.au).

The following files are contained within **NATIONAL.EXE** archive file:

- **NAT4WIN.EXE** the Windows based program (runs on all versions of Windows)
- **NATIONAL.TXT** the player database
- **NATIONAL.CLB** the club database
- **ALTERNAT.TXT** the non-home ("alt") players' database
- **EVENTS.EXE** the 3-character codes for all events
- **HISTORY.EXE** the history of all player and their awards by event (4 quarters only)
- **PRE82.TXT** a list of all red points issued prior to 1982

in addition, the archive file contains the following 4 files for use with the *DOS* version of the program (**NAT4DOS.EXE**) only:

- **NAT4DOS.EXE** the DOS based program (also runs in a DOS window in Windows)
- **NATIONAL.NDX** the numerical index to NATIONAL.TXT
- **NAT\_SORT.COM** a small sort utility program
- **NAT-FIND.COM** a small search utility program

### FEATURES:

(Note: some of the following features may not be available in the *DOS* version)

#### 1. Players Menu:

- **a. View a Player**  
look up details and masterpoints for any single registered player by *ABF* number or surname
- **b. Extract Selected Players**  
select a group of players for various purposes as stated on the screen.
- **c. Create ABF Data for Email Transmission**  
Use this function to *register, activate, transfer, delete, add or remove* players or change their details. A small "**player.txt**" file is automatically created, ready to be attached to an email message and

forwarded to the *ABF Masterpoint Centre*.

## 2. Master Points Menu:

**Note:** Masterpoint files normally have extensions starting with .MP followed by a digit between 1 and 5 which determines the type (colour) of points within the file. However, because of problems associated with .MP files, this program converts the .MP extensions to the more descriptive .GLD (gold), .RED (red), .GRN (green), .GAR (gold and red) and .RAG (red and green) extensions. These extensions are all acceptable to the Masterpoint Centre.

- - a. View Master Point Information in a MP File**  
select and view the details and total of an existing *masterpoint* file
  - b. Edit Master Point Information in a MP File**  
select and edit an existing *masterpoint* file
  - c. Merge Master Point Files**  
select and merge two or more *masterpoint* files of the *same type (colour)*
  - d. Create Cover Page for Awards (State MP-Secs only)**  
create an "**awards.txt**" file to accompany *state or congress masterpoint* files  
**Note:** This function applies only for *State masterpoint secretaries*.
  - e. Create ABF Award Adjustment Application for Email Transmission**  
Use this function to make adjustments to a *masterpoint* file that was previously submitted to use *Masterpoint Centre*. It creates an "**adjust.txt**" file which may subsequently be attached to an email message and forwarded to the *Centre*.

## 3. Clubs Menu:

- - a. View Club MP Secretaries**  
enter any keyword to select one or more *masterpoint* secretaries.
  - b. Home Club Membership Nos.**  
select a state (or all states) and view the total no. of Home members of the clubs.

## 4. Manual Files Menu:

- **a. Enter Club Members MP Manually**  
use this function to enter *masterpoints* for your home and alt members. Select a club to create a screen that shows all the players of the club. Then simply enter the players' *masterpoints* next to the *ABF* numbers (in much the same way as you would have written the numbers on the paper *CPAR* forms)
- **b. Enter Visitors MP Manually**  
use this function to enter *ABF* number and *masterpoints* for all players who are not included in function 4a.
- **c. Annual Membership Cancellations**  
use this function for the *Annual Membership Declaration* (must reach the *Masterpoint Centre* before March 31st). Select the club and then use the <spacebar> to change the "yes" to a "no" for all players whose memberships are not to be renewed. Then attach the resulting "xxxxcncl.txt" file to an email and forward to the *ABF Masterpoint Centre*.

## 5. Award Statements

- **a. Single player**  
this function provides for a unique way of showing, not only a player's points, but also the

sources from which they originate. Select a player by entering the player's *ABF* number

- **b. All Club Members**

this will give the same result as 5a., but for two or more players. Select a club number and Then, if required, limit the number of players by choosing surnames between "A" and "Z"

## **6. Setup Menu**

- - a. **Printer Setup**  
set up your printer
  - b. **Show Program Hints**  
not yet implemented

## **7. About Menu**

- - Shows Author and Version Number

## **8. Quit Menu**

- - Quits the Program